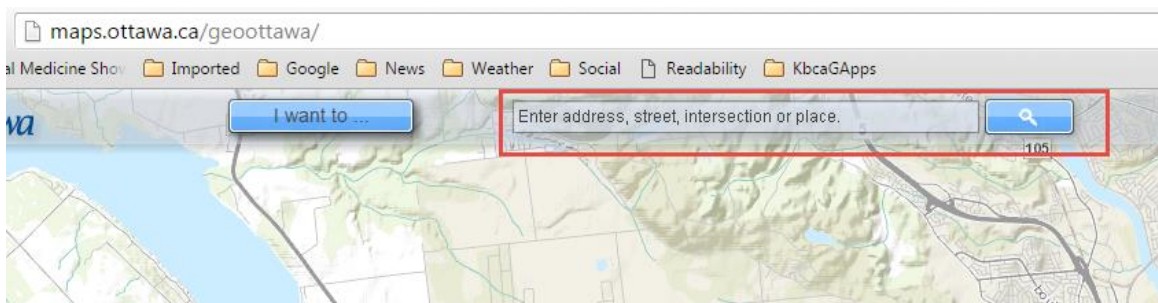


# Quick Guide to finding your Lot Lines

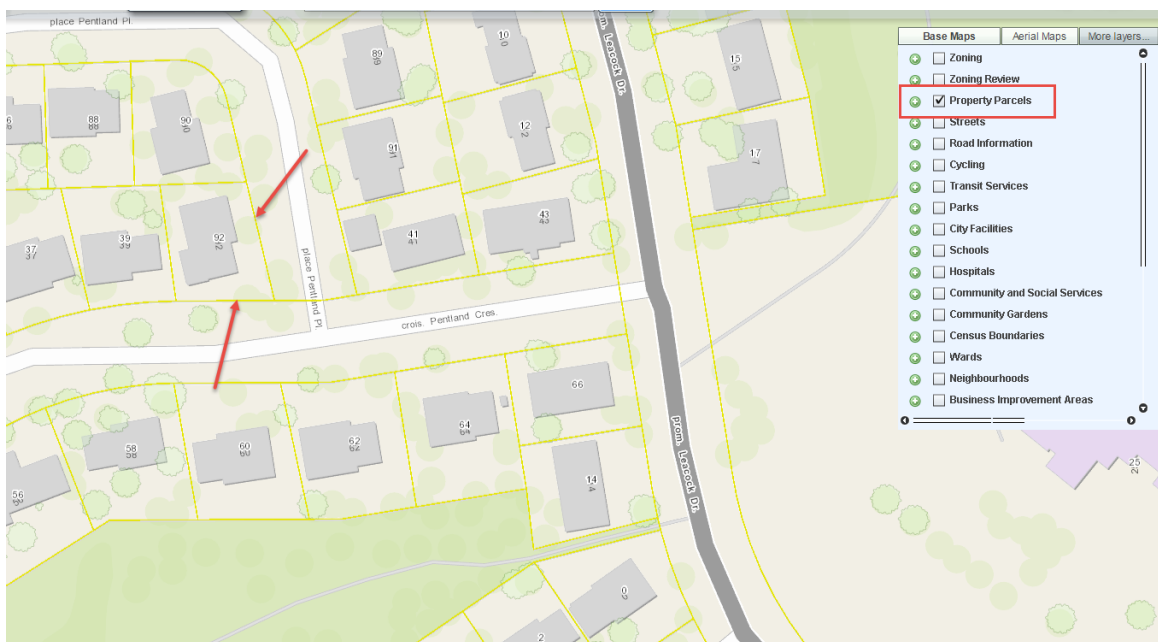
Monday, August 01, 2016

<http://maps.ottawa.ca> provides map services to show you the official lot lines for you home.

- Open the application in a browser using <http://maps.ottawa.ca>
- On the top of the window, enter your address



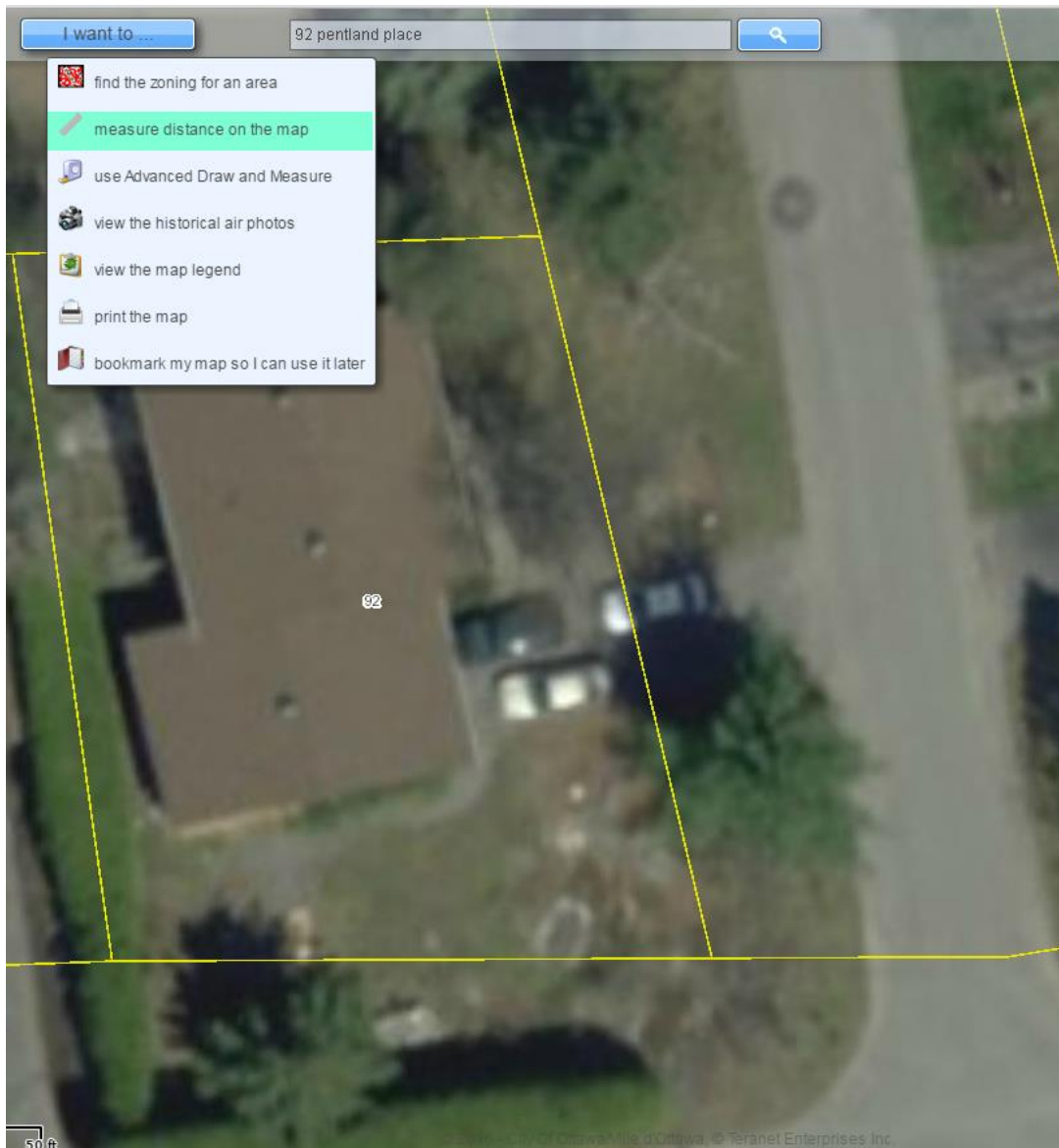
- Then select to include property boundaries under “More Layers” in the top right



The yellow lines (shown with red arrows) indicates where the boundary between your lot (private) and city land (public)

- Also add the Aerial Maps view (beside the More Layers) button to see your home, the property lot lines and the actual location of the street (and any existing trees you may have)

- You can also measure the distance from the lot line to the street. Click on the “I want to ...” button and select Measure distance on the map



- When the Measure Distance pop up appears wait 1 or 2 seconds then click the first point of the distance, then click on the second point of the distance you wish to measure. This illustrates a distance of 8.4 meters from the lot line to the edge of the street.

