

# Hydro One Easement in Beaverbrook - Maps

Sunday, July 30, 2017

## Summary

There are two Hydro Corridors in Beaverbrook.

- West – along the Kanata Lakes Golf Course towards Morgan Grant substation
- North – along Steacie and Teron towards Morgans Grant substation

The Easement Agreement of 1953 for the West corridor states:

“...being a strip of land 80 feet in width lying 40 feet measured perpendicularly from a center line {...} and centre line produced of a Twin Wood Pole transmission line...”

And that the agreement gives the right:

“...to keep the said land clear of all trees except fruit trees which shall not exceed 12 feet in height, and to fell, remove or trim from time to time such trees outside the said land as the Grantee may consider necessary for the operation and maintenance of the said Line and necessary equipment...”

## Maps

The maps included mark out the towers for each of the two corridors plus has marked the easement width as examples, which are “zoomed” in later examples.

The maps are taken from the City geomaps application which gives precise measurements on location.

It is odd that the actual Hydro Easements are not marked (or as available as a layer) in the geomaps application.

Note that the 40 feet from centre line in both directions from the middle of the hydro lines consumes the entire back yards plus a portion of the trees etc on the golf course

The map below shows the two hydro corridors.

- The left/bottom diagonal line is the Beaverbrook/Kanata Lakes Golf Club corridor to the west of Beaverbrook
- The right/top diagonal line is the Hydro corridor paralleling Steacie drive and the North East side of Lismer Crescent

Here are the addresses of homes (by street) that will be affected

- Beaverbrook
  - ◇ Borduas: 17 - 25 (odd numbers)
  - ◇ Carmichael Court - 1st block homes north of pathway
  - ◇ Carr Cres: 18 - 32 (even numbers)
  - ◇ Lismer Cres(6 to 32 - even numbers)
  - ◇ Reaney Court (units facing Hydro corridor)

- ◇ Pentland Cres 32 to 50 (even numbers)
- ◇ Tiffany Cres (16 to 42 - even numbers)
- ◇ Penfield: 163 + 201 thru 217 (odd numbers, total 10 properties)
- Kanata Lakes
  - ◇ Coady Way - buildings East of the Hydro corridor
  - ◇ Walden Dr: 212 - 236 (even numbers)
  - ◇ Kimmins Ct: 2, 3





The following is a close up of the hydro easement (towers are blue dots, the easement boundaries are the blue lines)



Below shows the Steacie/North Corridor, but this is for the higher voltage lines that are to the south west. I am not sure what the Easement agreement is for these hydro lines. However it's clear that most of the shrubs/trees in the back yards of homes bordering the soccer fields will be targets





This close up is of the path between Kanata Lakes and Leacock Drive which connects just across from the Stephen Leacock School.

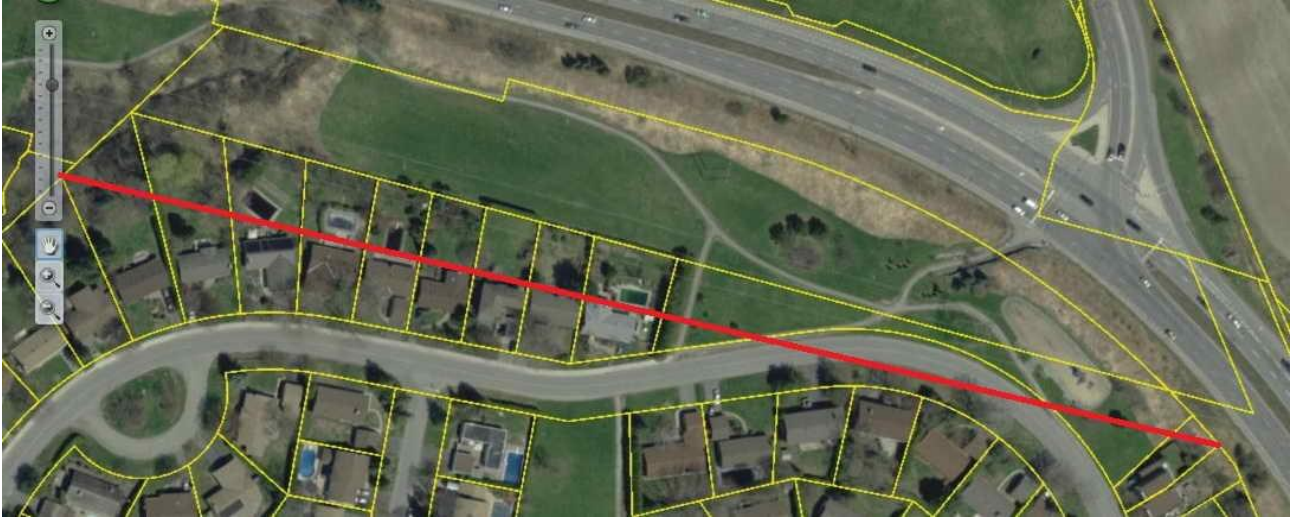


This closeup is of the homes on Carr Cres. that are affected. note that the Easement goes right up to the backdoors of homes on not only Carr Cres., but others as well.





The following is the Easement area impacting Penfield. Note that the Easement is much wider as the Hydro line is much higher voltage



## Photos

Location – path from Kanata Lakes to Stephen Leacock through the path at 16 Leacock Cres.

Based on the Easement agreement, most of trees on either side of the Hydro line are a clear threat to the lines if blown down in a storm. Several, but not all of the candidate trees are marked.



